

The Pavilion Project

A community-led initiative to replace the North Walls cricket pavilions, Winchester

Conceptual design by AR Design

Supported by Hyde 900





TOTAL	1	0
123		
WKT		LAST MAN
17	4	
LAST INNS		LAST WKT
27		

Pitch 1 pavilion





Pitch 2 pavilion

Some pavilions we have visited.....

- Easton & Martyr Worthy
- St. Edward's, Oxford
- Oundle, Peterborough
- Whitwell, Herts
- Vaughan Parry, Nottingham





Users of a new cricket pavilion:

- Lots of cricket teams, both league & social
- Rugby Club
- Bike Hub/Bespoke Biking
- Park Run
- Round Table – bonfire night
- Other sports users e.g. Forces Fit, Buggy Fit
- Hyde 900/community groups

- Next steps:
- Member/WCC agreement to begin fundraising
 - Consult the local community
 - Work with officers, councillors, planning department
 - Target date: start of cricket season 2018 for a new pavilion



Pitch 1 pavilion (rear)

AR DESIGN STUDIO

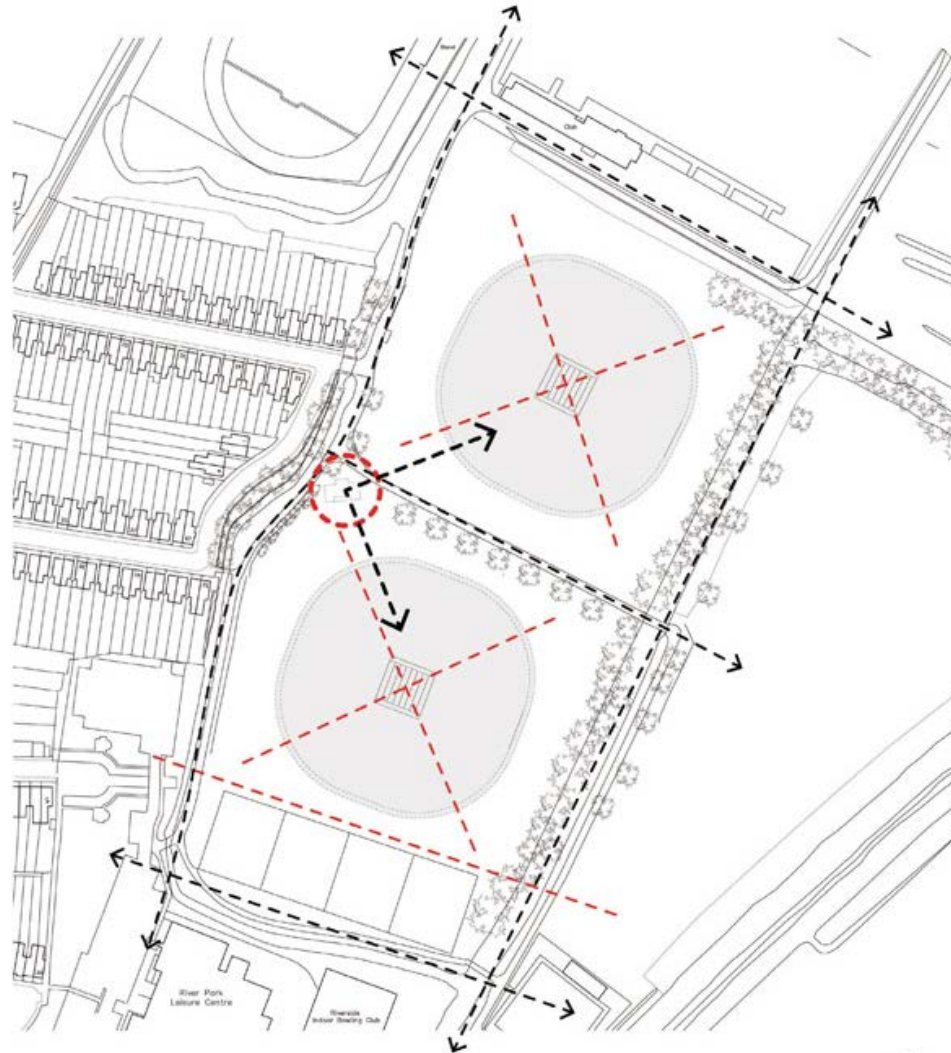
R I B A C h a r t e r e d A r c h i t e c t s

- Award winning RIBA Chartered Architects practice
- Established over 16 years ago by Director Andy Ramus
- 15 strong team working from their Winchester Studio
- A design focussed, young and highly motivated team of designers



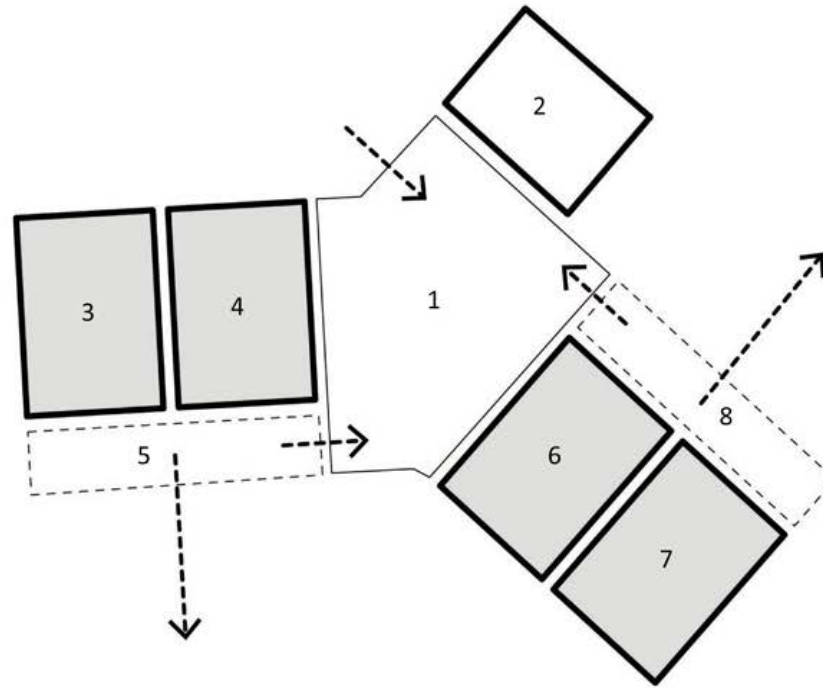






Access and Location

The location of the Pavilion is determined by the intersection of the pitches and the access routes through the park. It sits at the meeting point of Nuns walk and the central avenue through the park. This position allows for easy access and viewing to and from the two pitches.



Concept Development and Zoning

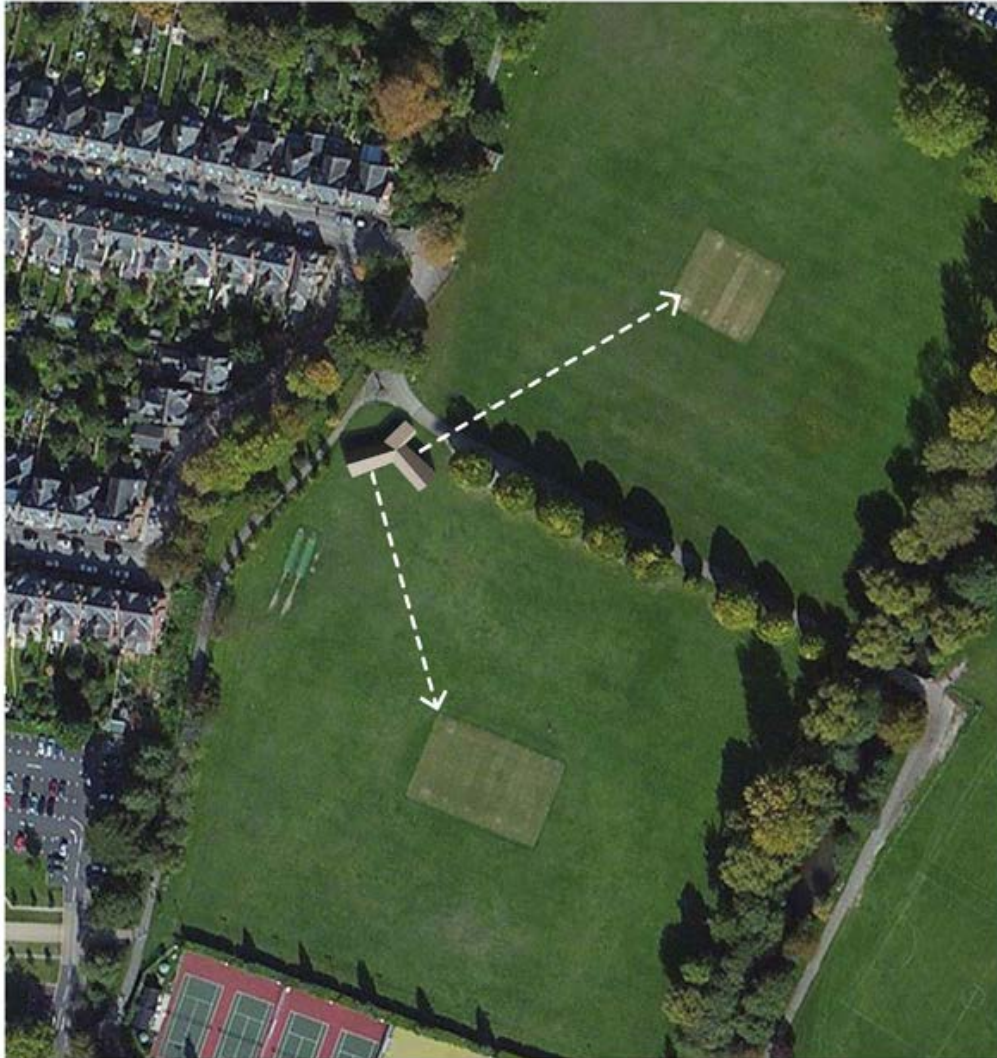


The core of the design is a communal space, providing a friendly neutral space for the teams and the public to interact.

This space is flanked by three wings. The first contains the service spaces for the communal space and the others serve a pitch each, containing changing facilities and a viewing platform.

Key:

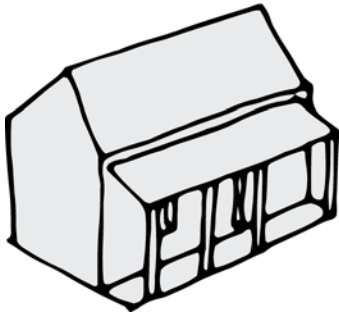
1. Communal Space
2. Kitchen, Store and Umpires Changing
3. Pitch 1 Changing Room
4. Pitch 1 Changing Room
5. Pitch 1 Viewing Platform
6. Pitch 2 Changing Room
7. Pitch 2 Changing Room
8. Pitch 2 Viewing Platform



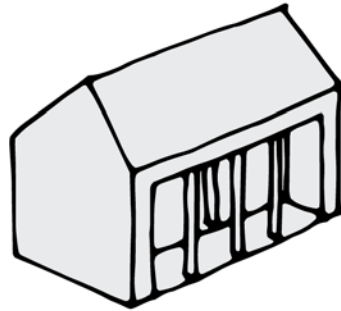
Orientation



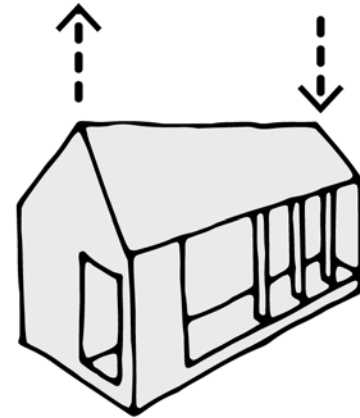
The building is orientated to face the viewing platforms towards their respective pitches. The communal area serves as a mediating space between the public park and the private pavilion facilities. It is a space for the teams and the general public to interact and will integrate the private aspects of the pavilion into the site.



Traditional Pavilion Form



Simplified form incorporating external space



Augmented form:

- Raised gable towards each point of site access
- Sunken gable to draw towards main club room



Natural Light
& Ventilation



Low e glass &
Solar Control



Thermal Mass



Greywater Recycling



High Insulation
Standard

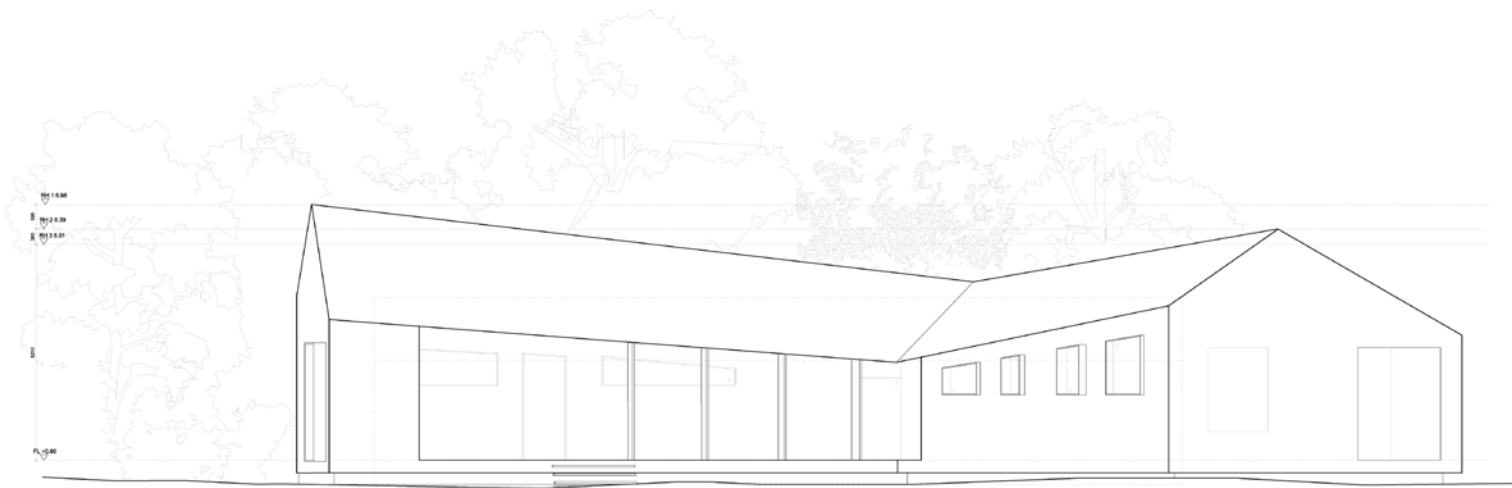


Locally Sourced
Materials

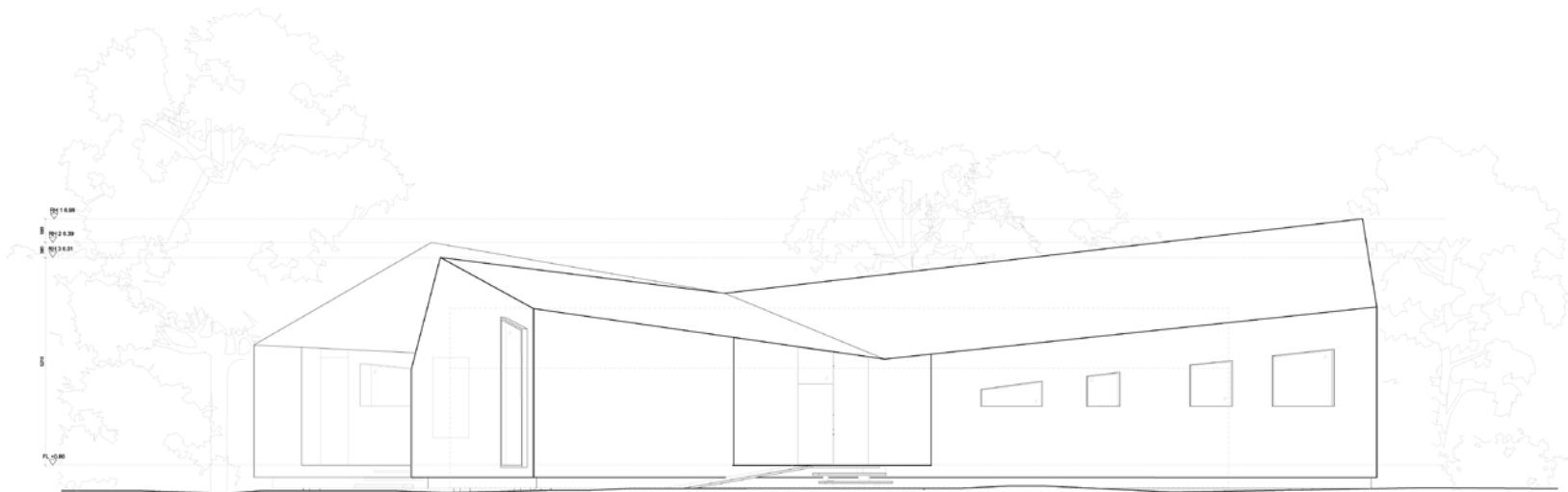
The Cricket Pavilion - Ground Floor Plan 1:50 scale

Site Address: North Walls Recreation Ground, Winchester, SO23 7EG

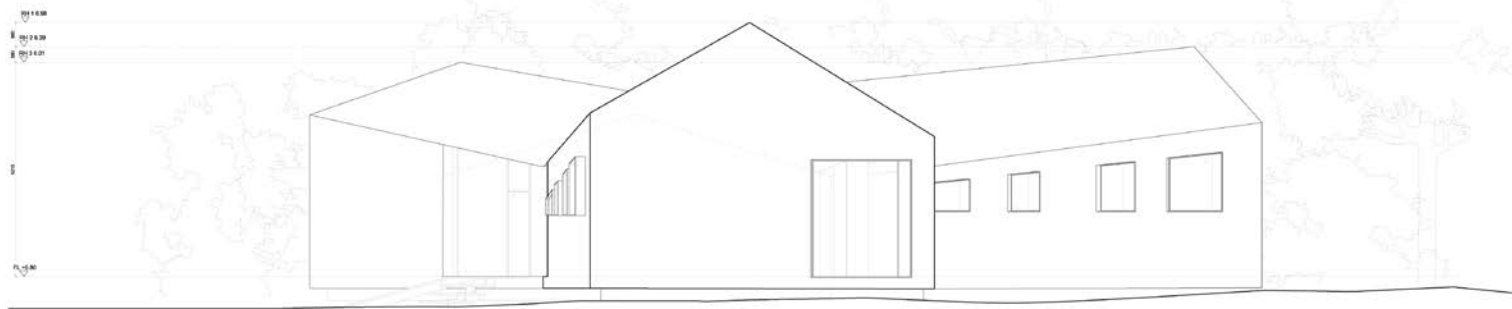




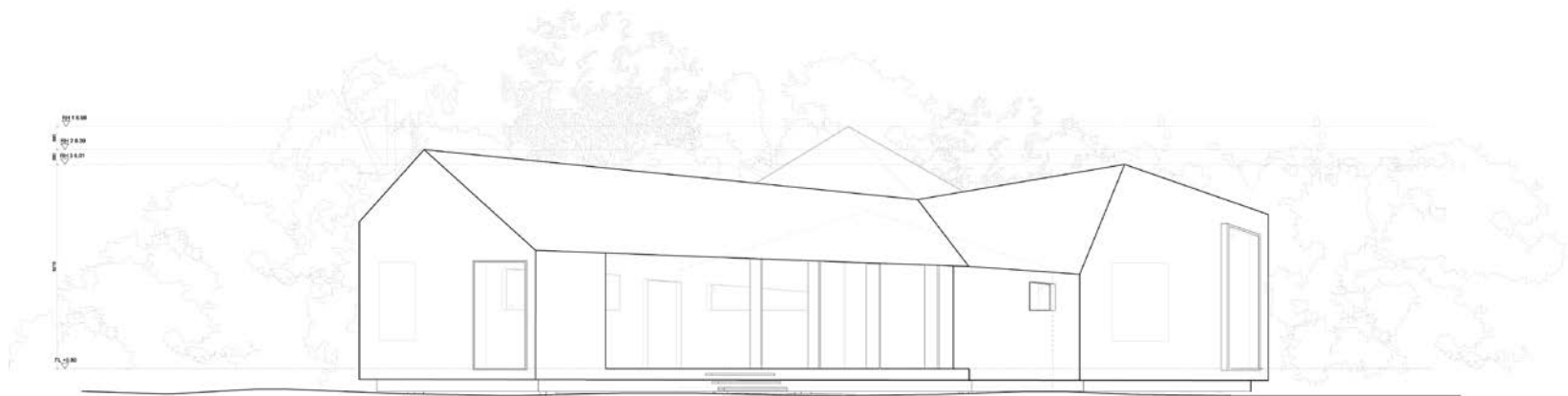
PROPOSED SOUTH ELEVATION
-2.5M DATUM



PROPOSED NORTH ELEVATION
-2.5M DATUM



PROPOSED WEST ELEVATION
-2.5M DATUM



PROPOSED EAST ELEVATION
-2.5M DATUM





THE PAVILION

Pavilion fundraising

The team are proposing a three-strand approach to fundraising:

Corporate sponsors

- Local businesses wishing to fulfil CSR commitments with either money or “in kind” donations

Community fundraising

- Wide ranging activities including events, social media and crowdfunding

Grants & Trusts

- Using advice and guidance from the ECB to access grants available via bodies such as National Lottery, Sport England etc

A white outline logo of a pavilion structure with the words "THE PAVILION" written across its front facade in a tall, thin, sans-serif font.

THE PAVILION

A solid black logo of a pavilion structure with the words "THE PAVILION" written across its front facade in a bold, white, sans-serif font.

THE PAVILION

North Walls Cricket Pavilion